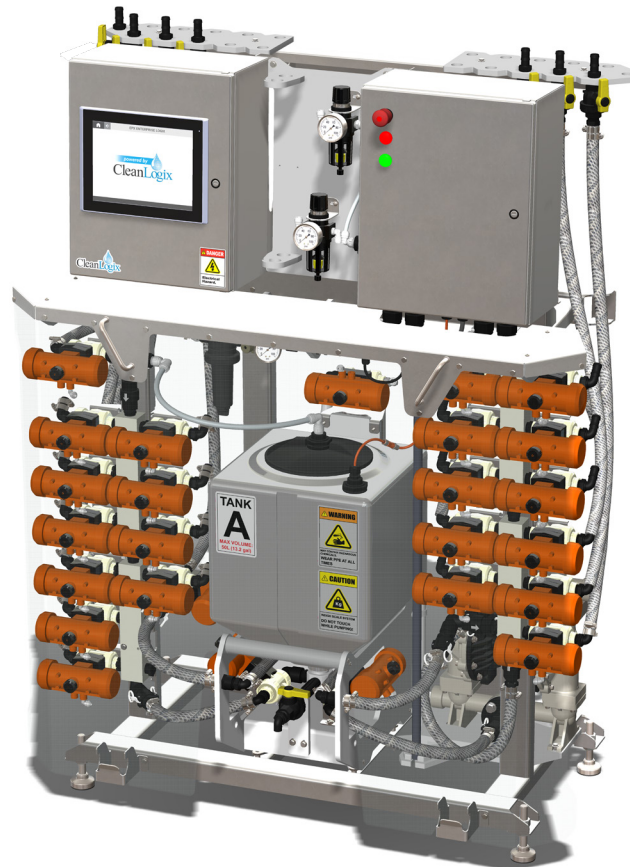
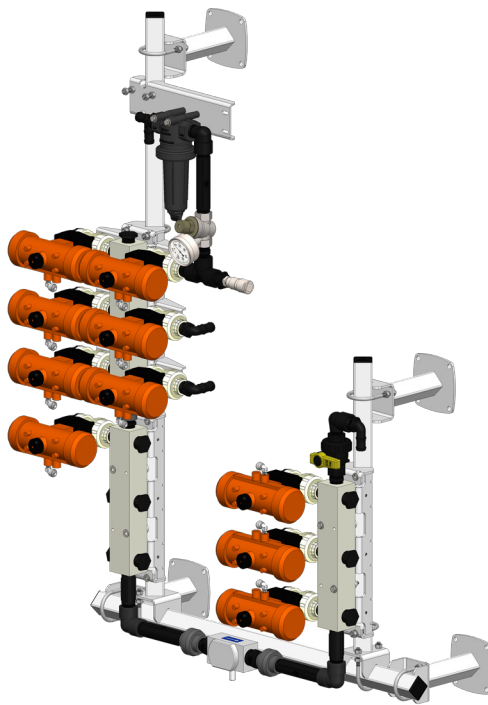


# EPX

EPX

PROCESS  
CONTROLS &  
REPORTING



  
**CleanLogix**  
Integrated • Sanitation • Intelligence

# RDS

## PRECISION WEIGHT BASED CHEMICAL DELIVERY

The 3rd generation Remote Delivery System - RDS MK3 - from Clean Logix is designed to deliver a precise amount of liquid to remote locations throughout a facility. The RDS can deliver a single chemical, water, or a mixture using either weight or flow based volume measurements for up to 10 different destinations. All crucial components such as valves, pumps, and scale are contained behind a PVC shield for added protection.

The system comes standard with a 1" delivery pump size and 3/4" air-actuated ball valves for maximum flow and delivery rate. An optional second tower can be added to maintain isolation between incompatible products. Systems are available in with either polypropylene or stainless steel valves for optimum chemical compatibility.

PRECISION WEIGHT BASED  
DISPENSING TO MULTIPLE  
LOCATIONS

PLANT CONTROL PLC NETWORK  
INTEGRATION

ACCURATE AND REPEATABLE  
VOLUME MEASUREMENTS

## BUILT TO EXPAND

### DUAL TOWER INSTALLATIONS

For the ultimate separation of non-compatible chemicals. Recipes, users, and report functions are all controlled from one HMI, while non-compatible chemicals are isolated to their own Towers with dedicated plumbing, manifolds, pumps, and tanks.

### RECIPE BLENDING

For mixed recipes that require an extra step to ensure adequate blending. Mounted directly to the tank, behind the security shield, the 6-blade PVC static mixer can be added on to any RDS tower for optional "blend" and "blend flush" steps to use in any recipe.

### FLOW METER MODULE

An extension of the RDS, the Flow Meter add-on allow operators to bypass the tank and weigh scale of the RDS Tower to deliver chemicals directly to a destination via flow based measurements. As many as 5 destinations can be configured per module.

### SURFACTANT TANK

An isolated, 1 gallon, 316 stainless steel vessel mounted to the back of the tank assembly provides a dedicated surfactant container for weighing with compressed air delivery to its final destination.



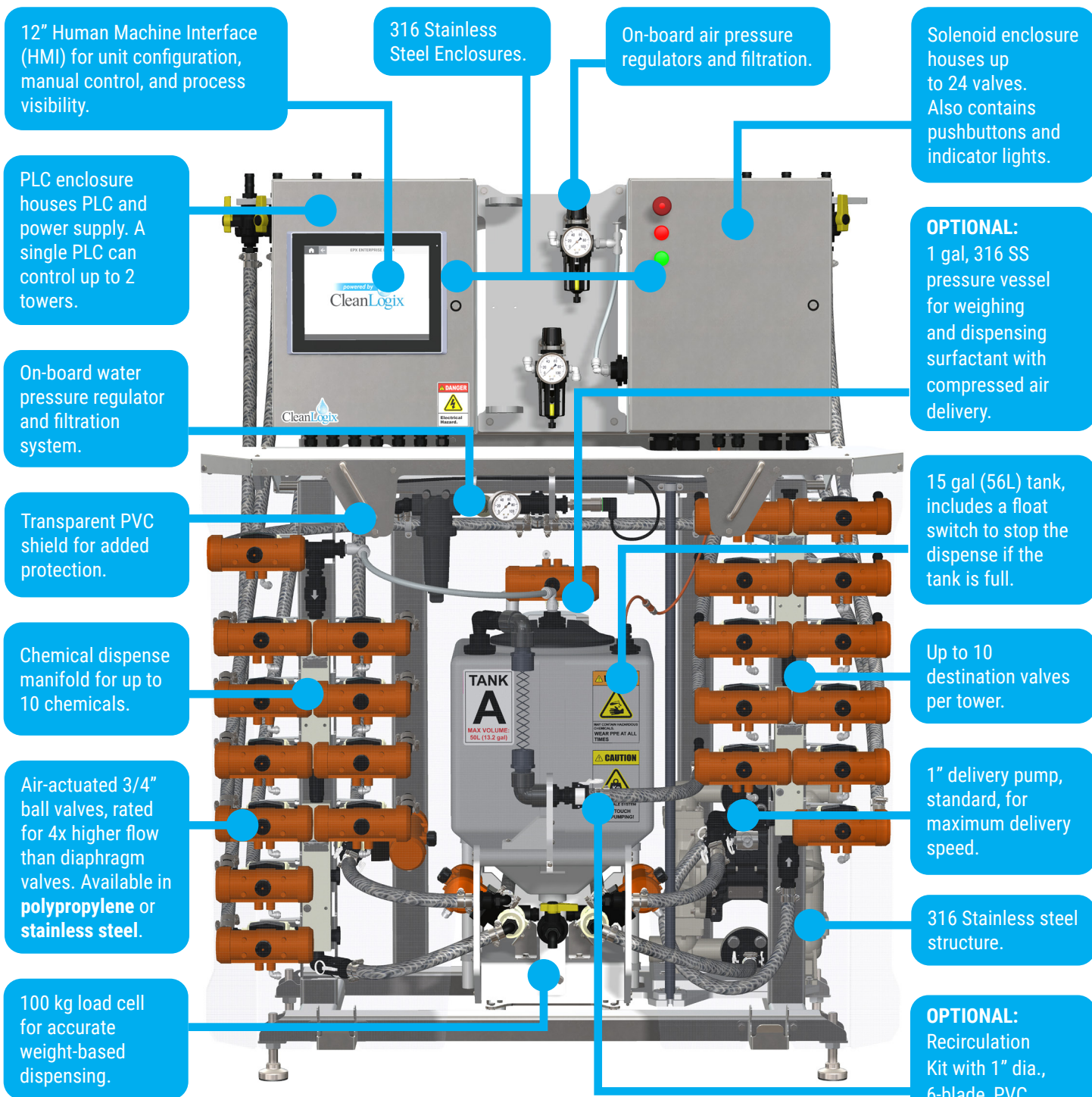
### DUAL TOWER INSTALLATION EXAMPLE

RDS-MK3-SV (stainless valves) shown with 2 chemical valves, 3 destination valves, and Surfactant Kit per tower. Static Mixer shown on Tower A.



# FEATURES

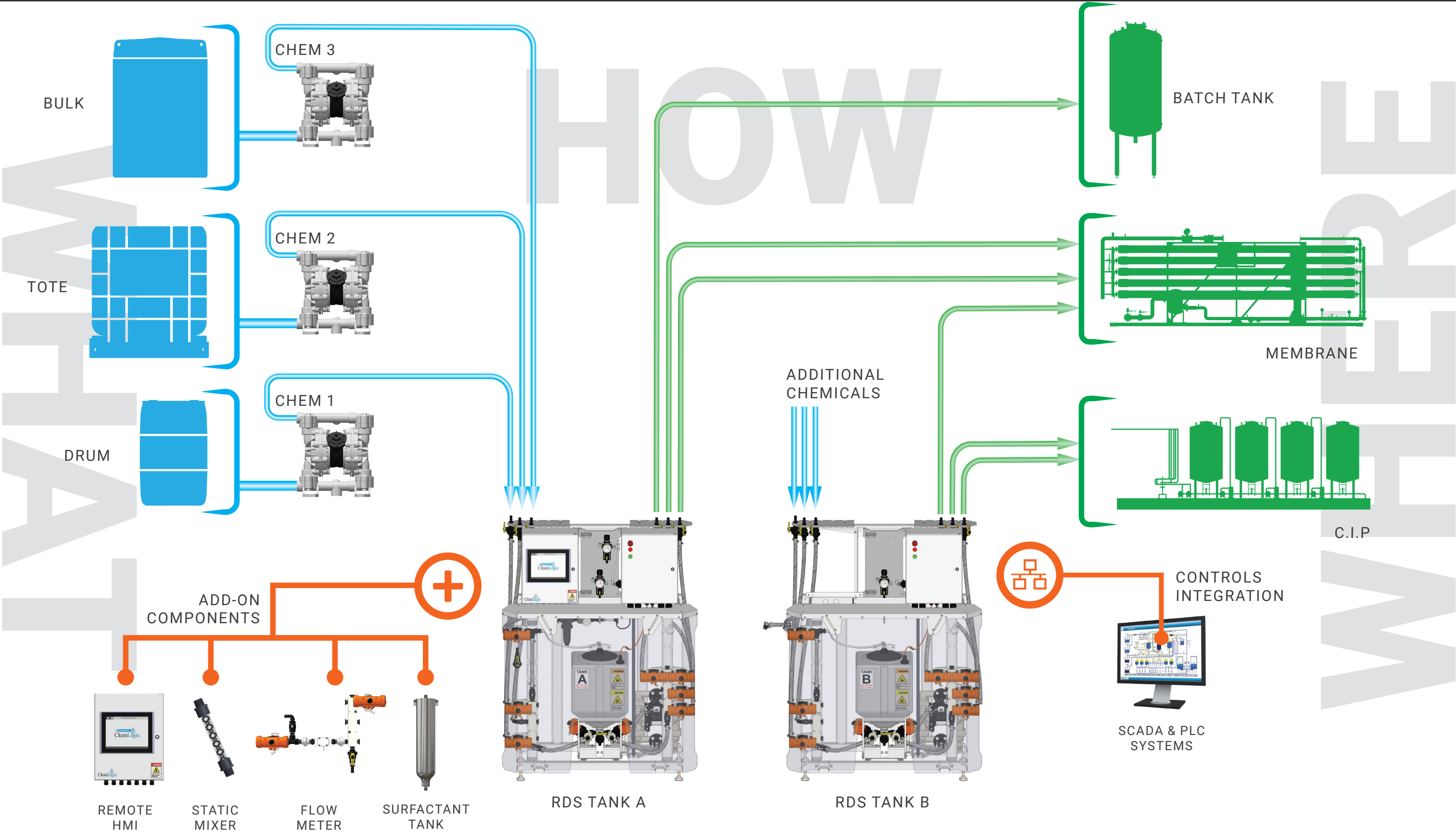
*RDS-MK3 shown with polypropylene valves, 10 chemicals, 10 destinations, Surfactant Kit, and Recirculation Kit.*



## OPTIONAL FEATURES:

- Surfactant Kit for weighing and dispensing surfactant with compressed air delivery.
- Recirculation Kit for recipe blending prior to final delivery step.
- Position verification switches on destination ball valves for PLC integration.
- Flow meter Module to bypass the weigh scale and deliver chemical directly for up to 5 destinations.

# SYSTEM ARCHITECTURE





# FDS

## HIGH VOLUME FLOW DELIVERY SYSTEM

The Flow Delivery System - FDS - from Clean Logix is designed to deliver a precise amount of liquid chemical to locations throughout a facility using flow rate volume measurements.

Utilizing PLC communication, the FDS integrates into the plant's control network, allowing the unit to receive dispense requests directly from the control room, without employee involvement, as well as communicate any errors up to operators.

Flow rates and delivery requests are all recorded in reports that can be obtained directly from the system.

Up to 3 flow meter systems can be connected to a single HMI Controller to maintain isolation between incompatible products. Each FDS comes standard with 3/4" air-actuated ball valves for maximum flow and delivery rates configured for either a tower or wall mounted installation set-up.

HIGH VOLUME FLOW-BASED  
DISPENSING TO MULTIPLE  
LOCATIONS

PLANT CONTROL PLC NETWORK  
INTEGRATION

TOWER-SKID OR WALL MOUNTED  
INSTALLATION OPTIONS

## FEATURES

12" HMI for controls, recipe configuration, & process status visibility.

PLC enclosure houses PLC and power supply. A single PLC can control up to 3 systems.

Transparent PVC shield for added protection.

Destination manifold outlet (up to 10 destinations per flow meter)

316 Stainless Steel Enclosures.

Solenoid enclosure houses up to 24 valves.

On-board air pressure regulator & filtration.

Air-actuated 3/4" ball valves.

Chemical manifold inlet (up to 10 chemicals per flow meter)

On-board air and water pressure regulator and filtration system.

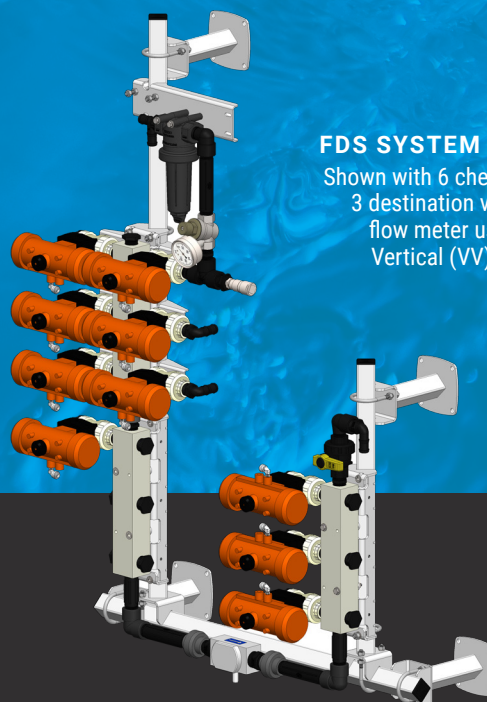
Polypropylene flow meter with Hastelloy shaft (Available in 3/8", 1/2", 3/4" and 1")

Available as tower or wall mounted rail

*FDS Tower shown with 3 incoming chemicals, 1" flow meter, and 4 outgoing destination.*

# CAPABILITIES

- High-volume flow based delivery for multiple locations using configurable recipe applications.
- Monitor and record flow rates via durable, polypropylene flow meters with Hastelloy shafts.
- Reports, including dispense history, are recorded on the unit for local access.
- Modular and expandable wall mounting systems and tower installation configurations available to fit the space needs of any facility.
- 316 Stainless Steel construction with polypropylene valves and fittings for maximum corrosion resistance and durability.
- Header Flush function uses water to “push” the product to its final destination, aiding in the prevention of chemical attack on the plumbing.

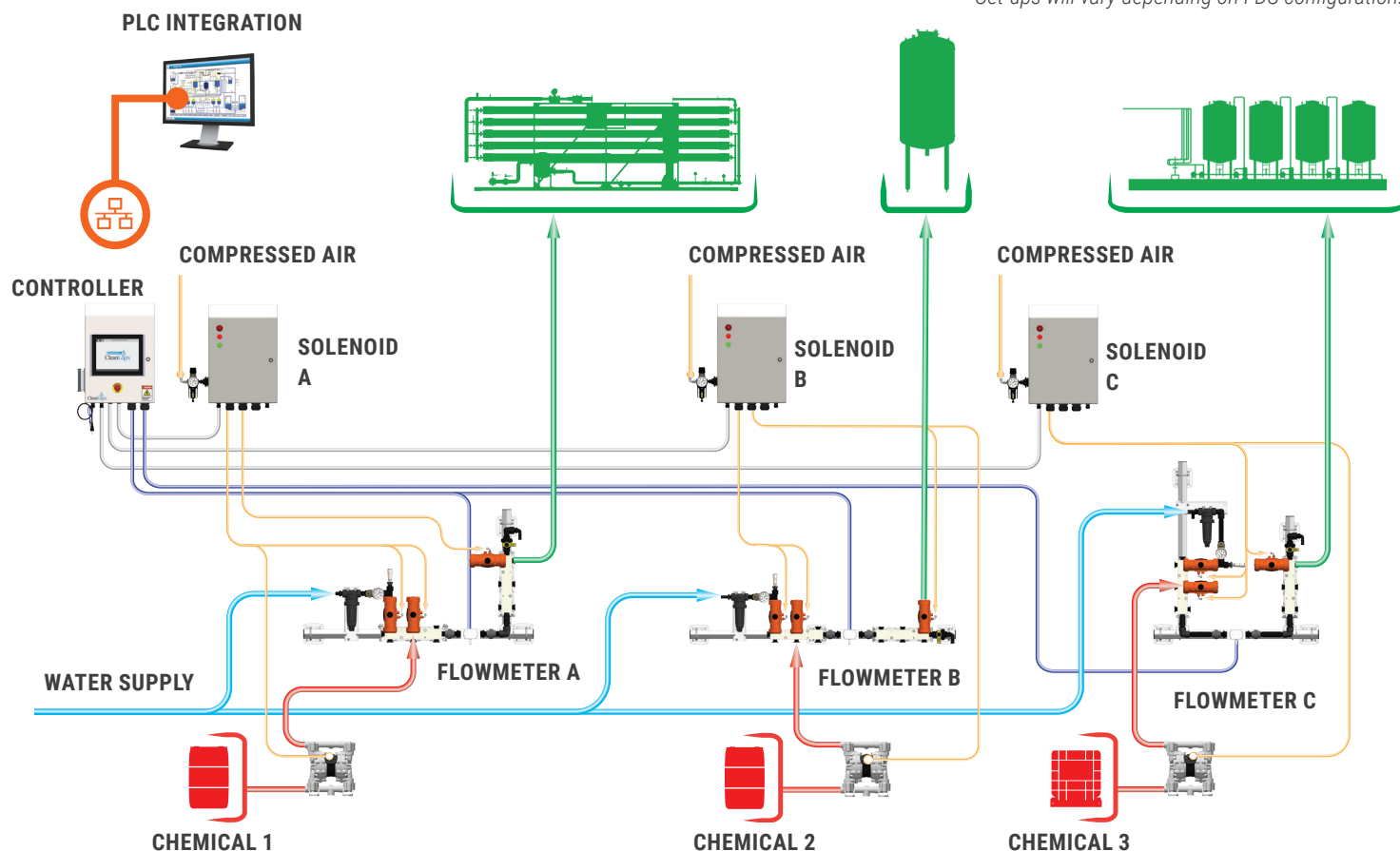


## FDS SYSTEM EXAMPLE

Shown with 6 chemical valves, 3 destination valves, and 1" flow meter using Vertical-Vertical (VV) Wall Mount.

# SYSTEM ARCHITECTURE

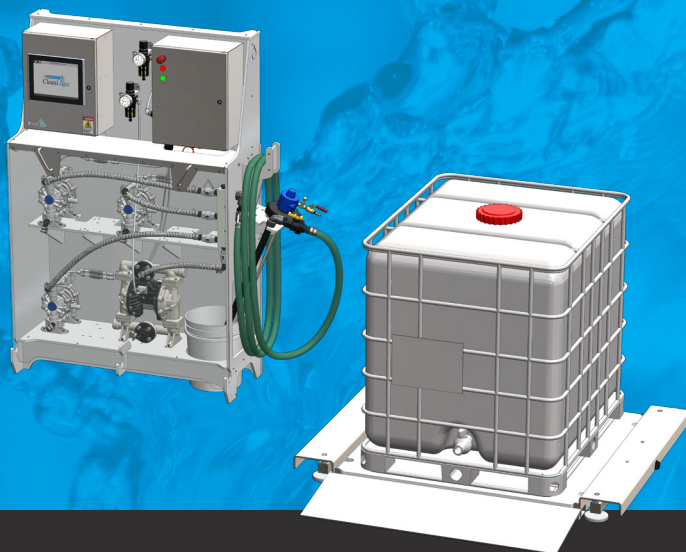
*\*Example system installation with 3 rail mounted flow meters. Set-ups will vary depending on FDS configuration.*





# EPX – TM TOTE MIXER

Similar to the RDS, the EPX Tote Mixer by Clean Logix offers facilities remote chemical delivery for large scale tote mixtures. Using a floor scale, the Tote Mixer dispenses a specified volume amount of multiple chemicals through a 1" dispense hose attached to a hand mixer. The hand mixer is secured to the tote via a twist on cap, as the chemicals are dispensed the mixer ensures everything has been sufficiently blended for later use.



LARGE SCALE TOTE MIXING  
OPERATIONS

ACCURATE WEIGHT BASED  
DISPENSES

SECURE PLATFORM WITH LOGIN  
REQUIREMENTS

## FEATURES

### ALL IN ONE INSTALLATION

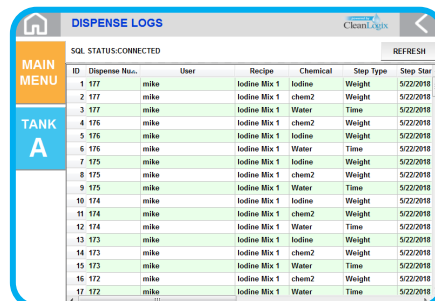
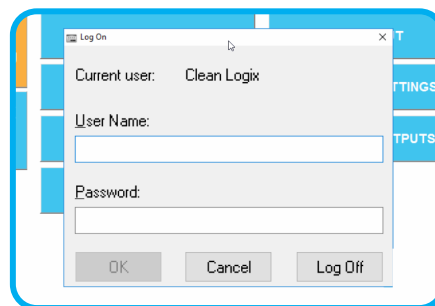
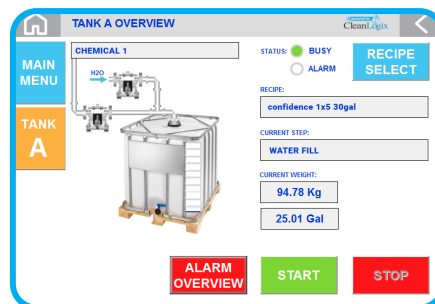
The Tote Mixer tower is a turn key set-up including HMI, Solenoid panel for controlling chemical pumps, and mounting shelves for secure pumps behind a PVC safety shield. The mixer is easily accessible on the side of the tower with a long 1" dispense hose for quick chemical delivery.

### AUTHORIZED USER LOGIN

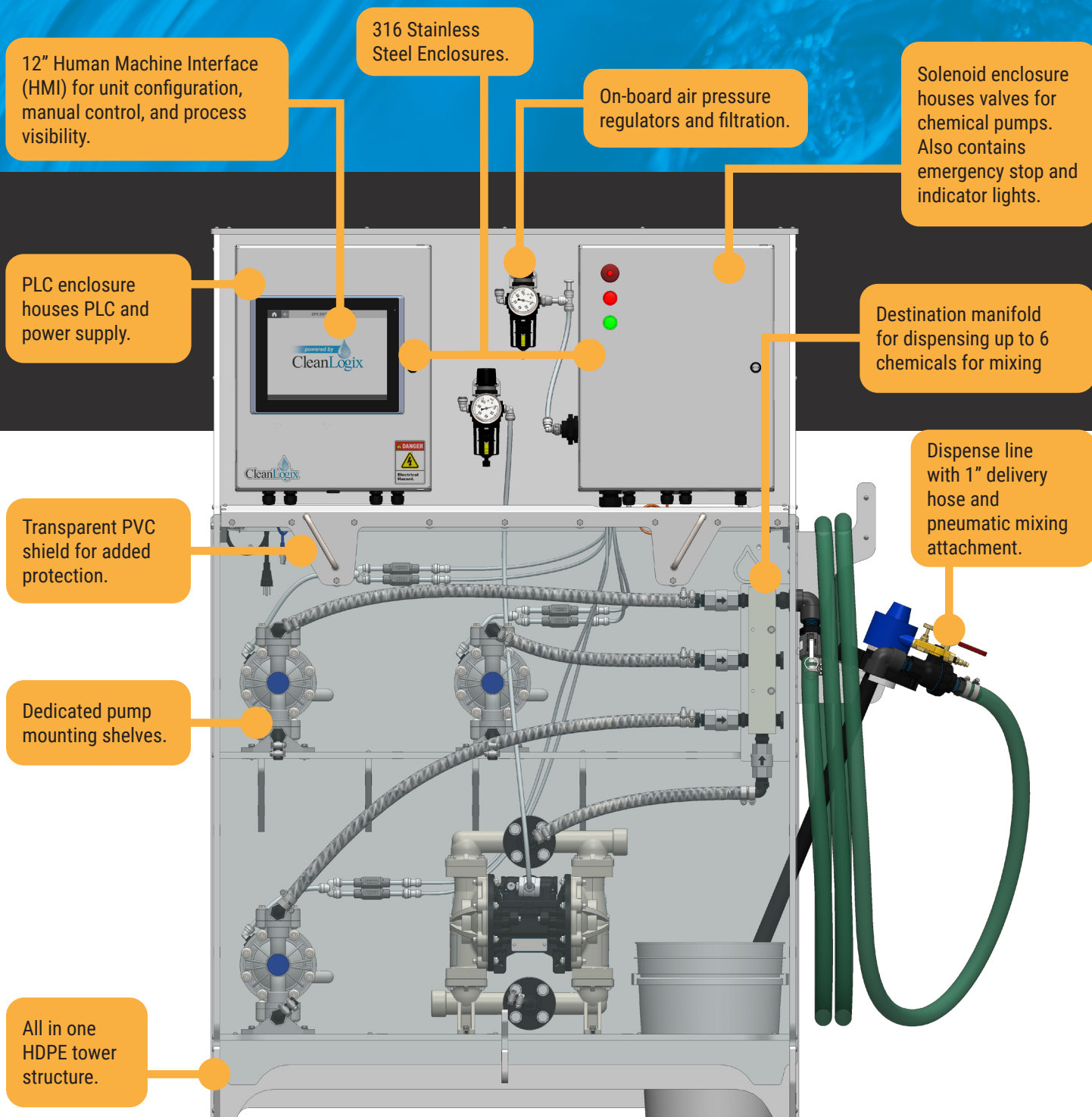
Access to the system is restricted to only authorized employees and requires personnel to login to configure the unit or access reports. Login passwords are custom to each individual User and can be organized into groups based on access levels.

### EASY TO USE

Simple, intuitive user operation makes configuring the unit easy for anyone by using the large 12" HMI touchscreen. Complete with a built-in, digital keyboard creating users, configuring sensors, and inputting calibrations becomes an easy and efficient process.



# FEATURES





# EPX - DM DOSING MANAGER

The EPX Dosing Manager by Clean Logix provides increased control of conductivity and dosing operations for all types of plant processing. The Dosing Manager features 4 to 6 zone control which includes automated dosing and monitoring of conductivity and pH to give users complete control over all procedures, from one screen. Spend less time and energy on monitoring and dosing procedures using Clean Logix and focus instead on what your facility does best.

EGG WASH,  
TUNNEL WASH,  
OR SOLUTION TENDING

ALLEN BRADLEY  
MICROLOGIX PLC



## FEATURES

### MULTI PURPOSE

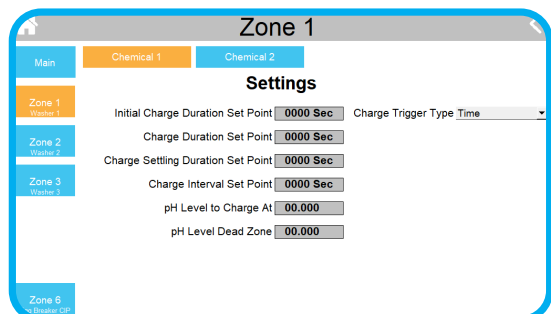
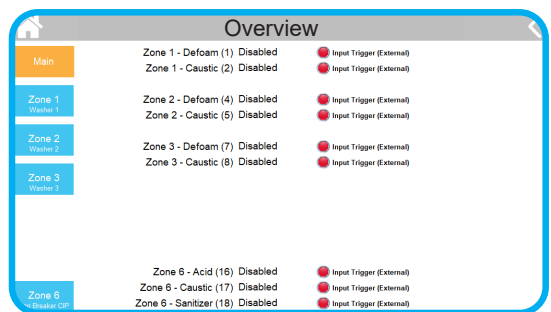
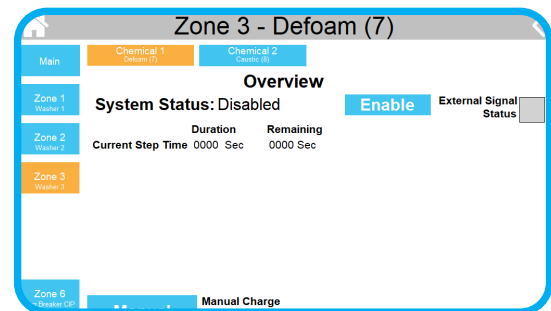
The Dosing Manager is capable of monitoring and controlling 6 zones (or operation groups), simultaneously. Each zone offers analog inputs and control of up to 3 valves to monitor and dose as necessary to maintain proper conductivity and pH levels.

### PLC INTEGRATION

Control where you want it - whether it be from the system's HMI screen or the comfort of a familiar PLC system. The Dosing Manager has the capabilities to interlock with main line manager PLC systems for integration of existing software for exceptional control of your operation.

### EASY TO USE

Simple, intuitive operation makes configuring the unit easy for anyone by using the large 9.7" HMI touchscreen. Complete with a built-in, digital keyboard configuring and operation becomes an easy and efficient process.



# EPX-TROLLEY

## WASH & LUBE AUTOMATION

The Trolley system by Clean Logix is an Human Machine Interface (HMI) system for trolley line wash and lube operations. The unit takes washing, sanitizing, and lubricating procedures for trolley-hook systems in processing and packing plants off individual employees and centralizes all operations to a single, 12" HMI touchscreen. Let Clean Logix's Enterprise Logix platform automate your FSMA Verification Documentation and set the standard for Food Safety Programs.



REAL TIME DATA  
TRENDING

INCREASED ACCOUNTABILITY  
& EFFICIENCY

## FEATURES

### EASY TO USE

Simple, intuitive user operation makes configuring the unit easy for anyone by using the large 12" HMI touchscreen. Complete with a built-in, digital keyboard configuring and operating the unit becomes an easy and efficient process.

### WASH TANK CONTROLS

The EPX Trolley makes monitoring and managing critical levels easy with a wide variety of sensors. Dual conductivity sensors ensure chemical strengths throughout the length of the wash tank. Level sensors keep the desired level of wash water in the tanks, as well as thermal sensors to log wash temperatures.

### LUBE TANK

The lubrication tank for the EPX-TROLLEY offer a separate set of readings and controls to monitor and maintain both oil and water levels. Temperature sensors can also be integrated for monitoring and control over critical heating set-points.





## CLEAN LOGIX, LLC

4928 W. Greenbrooke Dr. SE  
Grand Rapids, MI 49512

## CONTACT

T: 616-438-9200  
f: 616-588-6242

Sales@clean-logix.com  
www.clean-logix.com

## PREMIUM SUPPORT

Whether it's finding the right product or supporting an already existing one, Clean Logix's customer service team will be there for you to ensure you have the support you deserve.

---

## DURABLE PRODUCTS

Built to last even in the harshest environments. Clean Logix uses only the toughest and most reliable materials to ensure longevity and performance.

---

## CUTTING EDGE TECHNOLOGY

Clean Logix is dedicated to providing the highest quality systems using state of the art technology. Our experienced engineers emphasize both function and excellence with each product they develop.

---

MADE IN THE U.S.A.